

**Description**

Under-sink ball cock (R613) or washing machine ball cock (R614), with threaded male-male connections. Standard port.

**Versions and product codes**

Series	Product code	Connections	Finishing	Handle type	Handle colour	Notes
R613	R613X003	1/2" M (ISO 228) x 1/2" M (ISO 228)	Chrome plated brass	Plastic handle	Chrome plated	With chrome plated cover plate
R614	R614X004	1/2" M (ISO 228) x 3/4" M (ISO 228)	Chrome plated brass	Plastic handle	Chrome plated	With chrome plated cover plate

**Technical data**

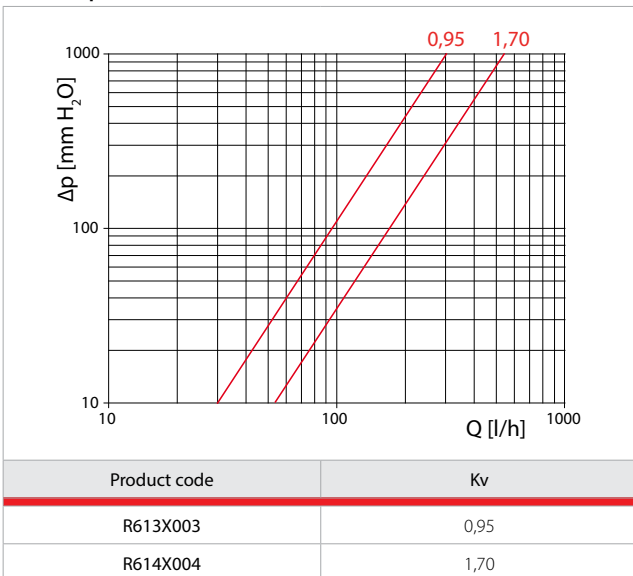
**Main features and materials**

- Specifically for use under sinks (R613) or for washing machines (R614)
- Standard port
- Cocks made of UNI EN 12165 CW617N chrome plated brass
- NBR gasket
- Sealing collar in protected AISI 430 steel
- ABS lever (R613) or zamak lever (R614)

**Fields of applications**

- Min. working temperature: 5 °C
- Max. working temperature: 70 °C (90 °C for short periods of time)
- Max. working pressure at 20 °C with water: 1,0 MPa (10 bar)

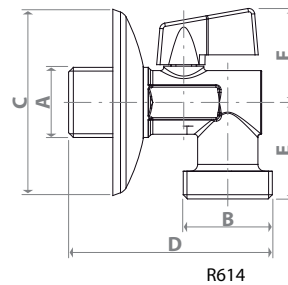
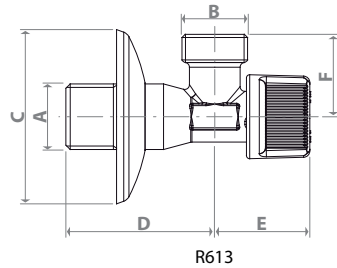
**Losses of pressure**





## Dimensions and Kv

Series	Product code	DN	A [mm]	B [mm]	C [mm]	D [mm]	E [mm]	F [mm]	Kv
R613	R613X003	6	1/2"M	1/2"M	Ø 55	47	30	26	0,95
R614	R614X004	8	1/2"M	3/4"M	Ø 55	60	29	28	1,7



## Product specifications

### R613

Under-sink ball cock with threaded male-male connections. Made of UNI EN 12165 CW617N chrome plated brass. NBR gasket. Sealing collar in protected AISI 430 steel. ABS lever. Standard port. Min. working temperature: 5 °C. Max. working temperature: 70 °C (90 °C for short periods of time). Max. working pressure at 20 °C with water: 1,0 MPa (10 bar).

### R614

Washing machine ball cock with threaded male-male connections. Made of UNI EN 12165 CW617N chrome plated brass. NBR gasket. Sealing collar in protected AISI 430 steel. Zamak lever. Standard port. Min. working temperature: 5 °C. Max. working temperature: 70 °C (90 °C for short periods of time). Max. working pressure at 20 °C with water: 1,0 MPa (10 bar).

### Additional information

For more information, go to [www.giacomini.com](http://www.giacomini.com) or contact our technical assistance service: ☎ +39 0322 923372 📠 +39 0322 923255 ✉ [consulenza.prodotti@giacomini.com](mailto:consulenza.prodotti@giacomini.com)  
 This document provides only general indications. Giacomini S.p.A. may change at any time, without notice and for technical or commercial reasons, the items included herewith.  
 The information included in this technical sheet do not exempt the user from strictly complying with the rules and good practice standards in force.  
 Giacomini S.p.A. Via per Alzo, 39 - 28017 San Maurizio d'Opaglio (NO) Italy