



Description

Ball cock with threaded female-male connection (R609), male-male connection (R610), female-female connection (R611), male connection-base for adaptor (R612). Standard port.

Versions and product codes

Series	Product code	Connections	Finishing	Handle type
R609	R609Y012	3/8" M (R, EN 10226) x 3/8" F (ISO 228)	Brass	Screwdriver bonnet
	R609Y013	1/2" M (R, EN 10226) x 1/2" F (ISO 228)	Brass	Screwdriver bonnet
	R609Y014	3/4" M (R, EN 10226) x 3/4" F (ISO 228)	Brass	Screwdriver bonnet
R610	R610Y003	1/2" M (ISO 228) x 1/2" M (ISO 228)	Brass	Screwdriver bonnet
R611	R611Y012	3/8" F (ISO 228) x 3/8" F (ISO 228)	Brass	Screwdriver bonnet
	R611Y013	1/2" F (ISO 228) x 1/2" F (ISO 228)	Brass	Screwdriver bonnet
	R611Y014	3/4" F (ISO 228) x 3/4" F (ISO 228)	Brass	Screwdriver bonnet
R612	R612Y003	1/2" M (R, EN 10226) x Base 16	Brass	Screwdriver bonnet

Technical data

Main features and materials

- Cocks for water for heating/cooling systems and not dangerous gas
- Standard port
- Cocks made of UNI EN 12165 CW617N brass
- Stem with double O-Ring
- Brass screwdriver bonnet

Fields of use

- Min. working temperature: -20 °C with 50 % glycol solutions
- Max. working temperature: 90 °C
- Max. working pressure at 20 °C with water and not dangerous gas: 1,0 MPa (10 bar)

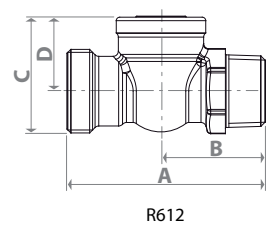
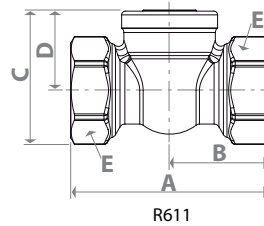
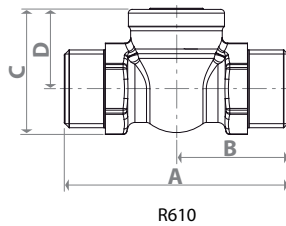
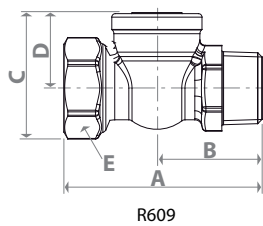


Note.
For opening and closing operations use a screwdriver or a 5 mm Allen wrench.



Dimensions and Kv

Series	Product code	DN	A [mm]	B [mm]	C [mm]	D [mm]	E [mm]	Kv
R609	R609Y012	10	54	29	34	22	22	6,7
	R609Y013	10	57	30	36	22	26	6,7
	R609Y014	15	67	36	43	25	32	12,7
R610	R610Y003	10	60	30	34	22	-	6,7
R611	R611Y012	10	49	24,5	33	22	22	6,7
	R611Y013	10	53	26,5	36	22	26	6,7
	R611Y014	15	61	30,5	43	25	32	12,7
R612	R612Y003	10	57	30	34	22	-	6,7



Product specifications

R609

Ball cock with female-male connections. Cocks for water for heating/cooling systems and not dangerous gas. In brass UNI EN 12165 CW617N. Standard port. Brass screwdriver bonnet. Stem with double O-Ring. Min. working temperature: -20 °C with 50 % glycol solutions. Max. working temperature: 90 °C. Max. working pressure at 20 °C with water and not dangerous gases: 1,0 MPa (10 bar).

R610

Ball cock with male-male connections. Cocks for water for heating/cooling systems and not dangerous gas. In brass UNI EN 12165 CW617N. Standard port. Brass screwdriver bonnet. Stem with double O-Ring. Min. working temperature: -20 °C with 50 % glycol solutions. Max. working temperature: 90 °C. Max. working pressure at 20 °C with water and not dangerous gases: 1,0 MPa (10 bar).

R611

Ball cock with female-female connections. Cocks for water for heating/cooling systems and not dangerous gas. In brass UNI EN 12165 CW617N. Standard port. Brass screwdriver bonnet. Stem with double O-Ring. Min. working temperature: -20 °C with 50 % glycol solutions. Max. working temperature: 90 °C. Max. working pressure at 20 °C with water and not dangerous gases: 1,0 MPa (10 bar).

R612

Ball cock with female connection-base for adaptor. Cocks for water for heating/cooling systems and not dangerous gas. In brass UNI EN 12165 CW617N. Standard port. Brass screwdriver bonnet. Stem with double O-Ring. Min. working temperature: -20 °C with 50 % glycol solutions. Max. working temperature: 90 °C. Max. working pressure at 20 °C with water and not dangerous gases: 1,0 MPa (10 bar).

Additional information

For more information, go to www.giacomini.com or contact our technical assistance service: ☎ +39 0322 923372 📠 +39 0322 923255 ✉ consulenza.prodotti@giacomini.com

This document provides only general indications. Giacomini S.p.A. may change at any time, without notice and for technical or commercial reasons, the items included herewith.

The information included in this technical sheet do not exempt the user from strictly complying with the rules and good practice standards in force.

Giacomini S.p.A. Via per Alzo, 39 - 28017 San Maurizio d'Opaglio (NO) Italy