

Description

Drain ball taps with male-male connections or female-male connections. For plumbing systems. Made of brass, chrome-plated or brass finish. Aluminium handle red painted (T-handle or one lug handle) or ring nut with flow indicator.

Versions and product codes

Series	Product code	Size	Handle	Brass finish	Use
R248M1	R248X001	1/2" M (R-EN 10226) x 3/4" M flat seat (ISO 228)	Ring nut with flow indicator, with cap and small chain	Chrome plated	Plumbing systems
	R248X003		Red T-handle, with cap and small chain		
	R248X023		One lug handle, with cap and small chain		
	R248Y001		Ring nut with flow indicator, with cap and small chain	Brass finish	
	R248Y003		Red T-handle, with cap and small chain		
	R248Y013		Red T-handle, without cap and without small chain		
	R248Y023		One lug handle, with cap and small chain		
R248F1	R248X002	1/2" F (ISO 228) x 3/4" M flat seat (ISO 228)	Ring nut with flow indicator, with cap and small chain	Chrome plated	Plumbing systems
	R248X004		Red T-handle, with cap and small chain		
	R248X024		One lug handle, with cap and small chain		
	R248Y002		Ring nut with flow indicator, with cap and small chain	Brass finish	
	R248Y004		Red T-handle, with cap and small chain		
	R248Y024		One lug handle, with cap and small chain		



Technical data

Main features and materials

- Suitable for plumbing.
- Connections: M (R - EN 10226) x M flat seat (ISO 228) F (ISO 228) x M flat seat (ISO 228).
- Standard port.
- Body, sleeve, cap and chain: UNI EN 12165 CW617N chrome-plated brass or brass finish.
- Aluminium handle red painted (T-handle or one lug handle) or ring nut with flow indicator.
- Stem with double O-Ring.
- Nut with anti-corrosion coating, with guarantee seal and hologram.

Field of applications

- Temperature range: 5÷90 °C
- Minimum working temperature: -20 °C with 50 % glycol solutions
- Max. working pressure at 20 °C with water: 16 bar

Valves Kv

Size	Kv
1/2" x 3/4"	10,2

Product specifications

R248X001

Drain ball tap with connections M (R - EN 10226) x M flat seat (ISO 228). For plumbing systems. Standard port. Body, sleeve, cap and chain made of UNI EN 12165 CW617N chrome-plated brass. Ring nut handle with flow indicator. Stem with double O-Ring. Nut with anti-corrosion coating, with guarantee seal and hologram. Temperature range: 5÷90 °C. Minimum working temperature: -20 °C with 50 % glycol solutions. Max. working pressure at 20 °C with water: 16 bar.

R248Y001

Drain ball tap with connections M (R - EN 10226) x M flat seat (ISO 228). For plumbing systems. Standard port. Body, sleeve, cap and chain made of UNI EN 12165 CW617N brass finish. Ring nut handle with flow indicator. Stem with double O-Ring. Nut with anti-corrosion coating, with guarantee seal and hologram. Temperature range: 5÷90 °C. Minimum working temperature: -20 °C with 50 % glycol solutions. Max. working pressure at 20 °C with water: 16 bar.

R248X002

Drain ball tap with connections F (ISO 228) x M flat seat (ISO 228). For plumbing systems. Standard port. Body, sleeve, cap and chain made of UNI EN 12165 CW617N chrome-plated brass. Ring nut handle with flow indicator. Stem with double O-Ring. Nut with anti-corrosion coating, with guarantee seal and hologram. Temperature range: 5÷90 °C. Minimum working temperature: -20 °C with 50 % glycol solutions. Max. working pressure at 20 °C with water: 16 bar.

R248Y002

Drain ball tap with connections F (ISO 228) x M flat seat (ISO 228). For plumbing systems. Standard port. Body, sleeve, cap and chain made of UNI EN 12165 CW617N brass finish. Ring nut handle with flow indicator. Stem with double O-Ring. Nut with anti-corrosion coating, with guarantee seal and hologram. Temperature range: 5÷90 °C. Minimum working temperature: -20 °C with 50 % glycol solutions. Max. working pressure at 20 °C with water: 16 bar.

R248X003

Drain ball tap with connections M (R - EN 10226) x M flat seat (ISO 228). For plumbing systems. Standard port. Body, sleeve, cap and chain made of UNI EN 12165 CW617N chrome-plated brass. Aluminium T-handle, red painted. Stem with double O-Ring. Nut with anti-corrosion coating, with guarantee seal and hologram. Temperature range: 5÷90 °C. Minimum working temperature: -20 °C with 50 % glycol solutions. Max. working pressure at 20 °C with water: 16 bar.

R248Y003

Drain ball tap with connections M (R - EN 10226) x M flat seat (ISO 228). For plumbing systems. Standard port. Body, sleeve, cap and chain made of UNI EN 12165 CW617N brass finish. Aluminium T-handle, red painted. Stem with double O-Ring. Nut with anti-corrosion coating, with guarantee seal and hologram. Temperature range: 5÷90 °C. Minimum working temperature: -20 °C with 50 % glycol solutions. Max. working pressure at 20 °C with water: 16 bar.

R248X004

Drain ball tap with connections F (ISO 228) x M flat seat (ISO 228). For plumbing systems. Standard port. Body, sleeve, cap and chain made of UNI EN 12165 CW617N chrome-plated brass. Aluminium T-handle, red painted. Stem with double O-Ring. Nut with anti-corrosion coating, with guarantee seal and hologram. Temperature range: 5÷90 °C. Minimum working temperature: -20 °C with 50 % glycol solutions. Max. working pressure at 20 °C with water: 16 bar.

R248Y004

Drain ball tap with connections F (ISO 228) x M flat seat (ISO 228). For plumbing systems. Standard port. Body, sleeve, cap and chain made of UNI EN 12165 CW617N brass finish. Aluminium T-handle, red painted. Stem with double O-Ring. Nut with anti-corrosion coating, with guarantee seal and hologram. Temperature range: 5÷90 °C. Minimum working temperature: -20 °C with 50 % glycol solutions. Max. working pressure at 20 °C with water: 16 bar.

R248Y013

Drain ball tap with connections M (R - EN 10226) x M flat seat (ISO 228). For plumbing systems. Standard port. Body and sleeve made of UNI EN 12165 CW617N brass finish. Aluminium T-handle, red painted. Stem with double O-Ring. Nut with anti-corrosion coating, with guarantee seal and hologram. Temperature range: 5÷90 °C. Minimum working temperature: -20 °C with 50 % glycol solutions. Max. working pressure at 20 °C with water: 16 bar.

R248X023

Drain ball tap with connections M (R - EN 10226) x M flat seat (ISO 228). For plumbing systems. Standard port. Body, sleeve, cap and chain made of UNI EN 12165 CW617N chrome-plated brass. One lug handle, red painted. Stem with double O-Ring. Nut with anti-corrosion coating, with guarantee seal and hologram. Temperature range: 5÷90 °C. Minimum working temperature: -20 °C with 50 % glycol solutions. Max. working pressure at 20 °C with water: 16 bar.

R248Y023

Drain ball tap with connections M (R - EN 10226) x M flat seat (ISO 228). For plumbing systems. Standard port. Body, sleeve, cap and chain made of UNI EN 12165 CW617N brass finish. One lug handle, red painted. Stem with double O-Ring. Nut with anti-corrosion coating, with guarantee seal and hologram. Temperature range: 5÷90 °C. Minimum working temperature: -20 °C with 50 % glycol solutions. Max. working pressure at 20 °C with water: 16 bar.

R248X024

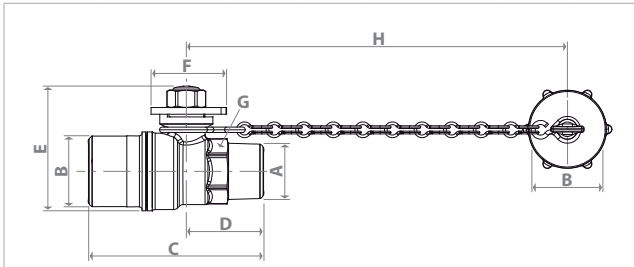
Drain ball tap with connections F (ISO 228) x M flat seat (ISO 228). For plumbing systems. Standard port. Body, sleeve, cap and chain made of UNI EN 12165 CW617N chrome-plated brass. One lug handle, red painted. Stem with double O-Ring. Nut with anti-corrosion coating, with guarantee seal and hologram. Temperature range: 5÷90 °C. Minimum working temperature: -20 °C with 50 % glycol solutions. Max. working pressure at 20 °C with water: 16 bar.

R248Y024

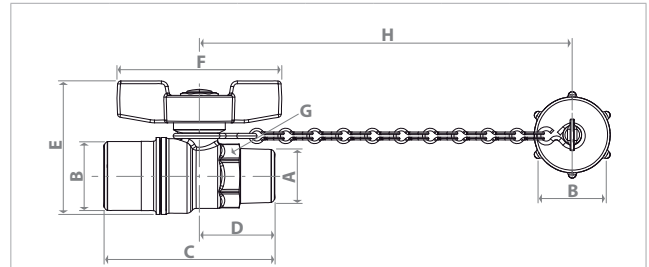
Drain ball tap with connections F (ISO 228) x M flat seat (ISO 228). For plumbing systems. Standard port. Body, sleeve, cap and chain made of UNI EN 12165 CW617N brass finish. One lug handle, red painted. Stem with double O-Ring. Nut with anti-corrosion coating, with guarantee seal and hologram. Temperature range: 5÷90 °C. Minimum working temperature: -20 °C with 50 % glycol solutions. Max. working pressure at 20 °C with water: 16 bar.

Dimensions

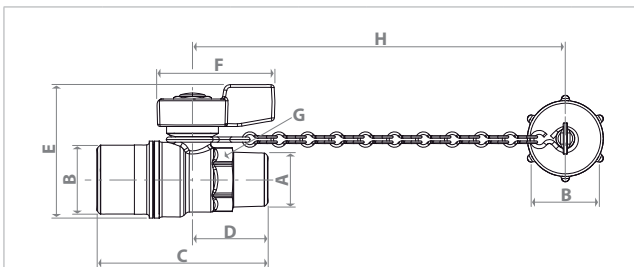
R248M1



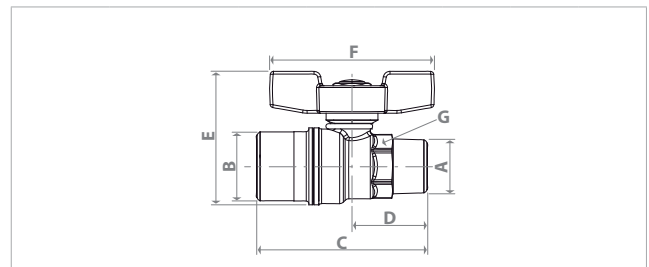
Product code	A x B	C [mm]	D [mm]	E [mm]	F [mm]	G [mm]	H [mm]
R248X001	1/2" M x 3/4" M	65	29	47	28	22	140
R248Y001							



Product code	A x B	C [mm]	D [mm]	E [mm]	F [mm]	G [mm]	H [mm]
R248X003	1/2" M x 3/4" M	65	29	51	63	22	140
R248Y003							

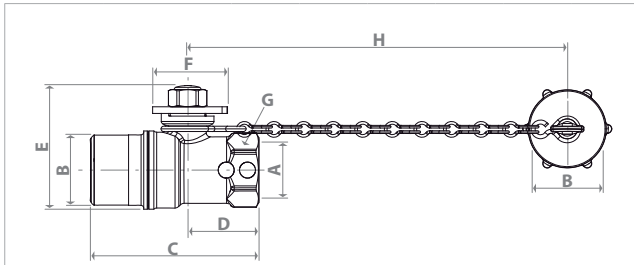


Product code	A x B	C [mm]	D [mm]	E [mm]	F [mm]	G [mm]	H [mm]
R248X023	1/2" M x 3/4" M	65	29	51	44	22	140
R248Y023							

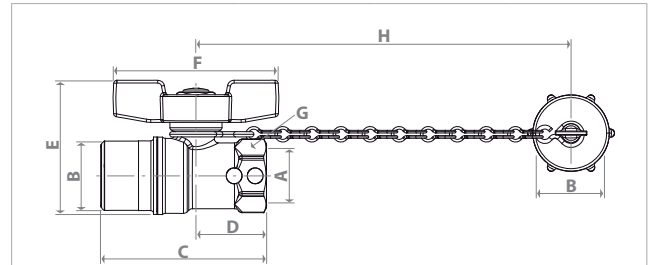


Product code	A x B	C [mm]	D [mm]	E [mm]	F [mm]	G [mm]	H [mm]
R248X013	1/2" M x 3/4" M	65	29	51	63	22	140

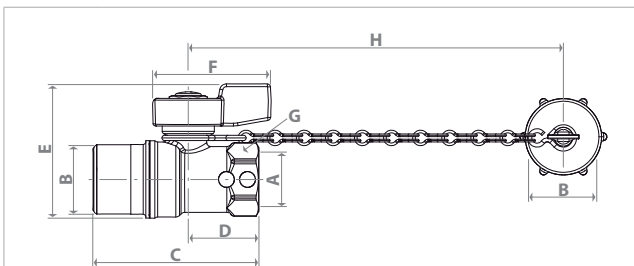
R248F1



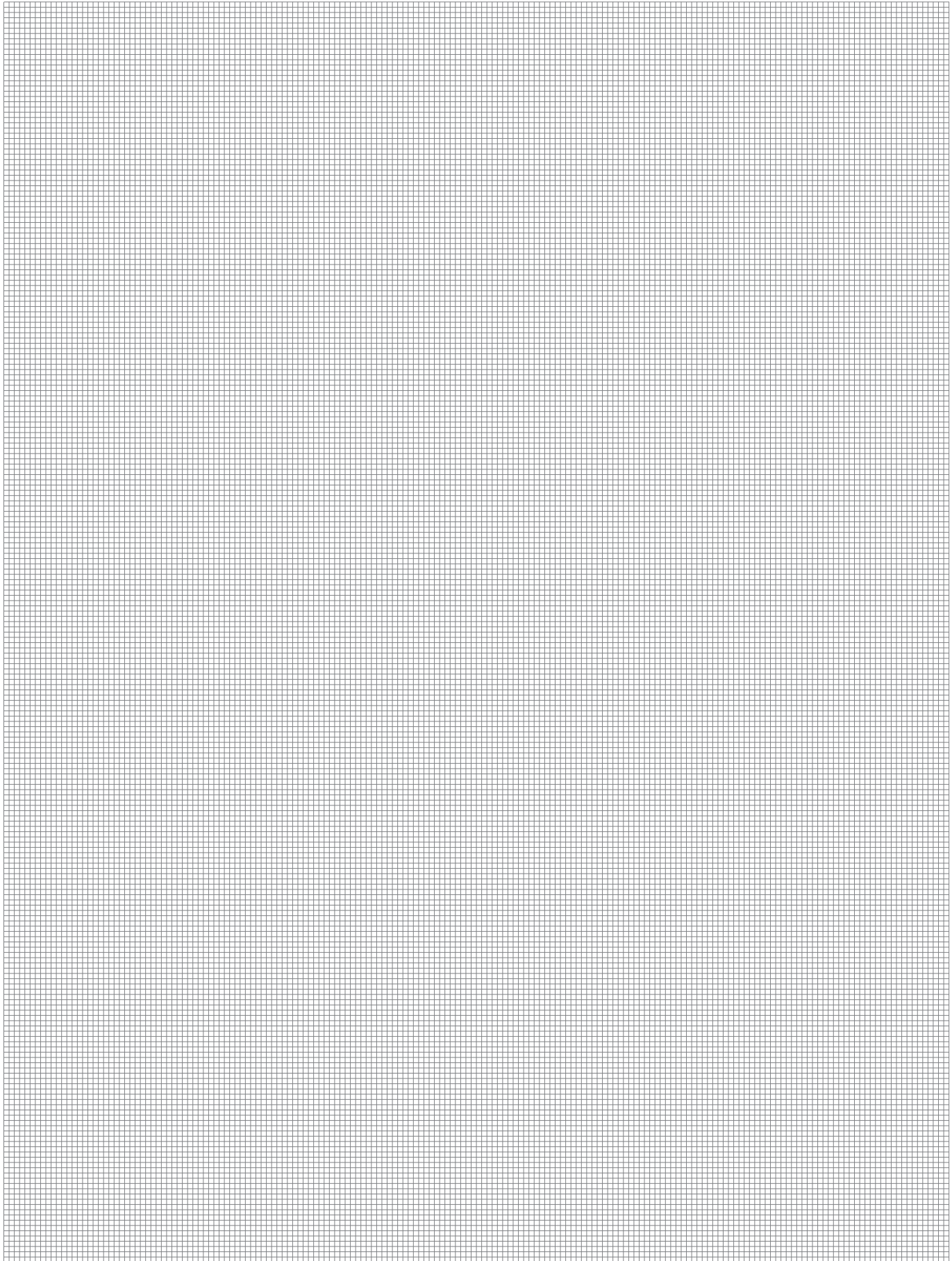
Product code	A x B	C [mm]	D [mm]	E [mm]	F [mm]	G [mm]	H [mm]
R248X002	1/2" F x 3/4" M	63	27	47	28	25	140
R248Y002							



Product code	A x B	C [mm]	D [mm]	E [mm]	F [mm]	G [mm]	H [mm]
R248X004	1/2" F x 3/4" M	63	27	51	63	25	140
R248Y004							



Product code	A x B	C [mm]	D [mm]	E [mm]	F [mm]	G [mm]	H [mm]
R248X024	1/2" F x 3/4" M	63	27	51	44	25	140
R248Y024							



Additional information

For additional information please check the website www.giacomini.com or contact the technical service: ☎ +39 0322 923372 📠 +39 0322 923255 ✉ consulenza.prodotti@giacomini.com
This pamphlet is merely for information purposes. Giacomini S.p.A. retains the right to make modifications for technical or commercial reasons, without prior notice, to the items described in this pamphlet. The information described in this technical pamphlet does not exempt the user from following carefully the existing regulations and norms on good workmanship.
Giacomini S.p.A. Via per Alzo, 39 - 28017 San Maurizio d'Opaglio (NO) Italy