

R150, R150B

047U51058 09/2011

GIACOMINI
Technology in Comfort

S
ICIM
ISO
9001
0006/7

A
ICIM
ISO
14001
0032A/2

L
ICIM
OHSAS
18001
0064L/0

GRUPPO DI RIEMPIMENTO AUTOMATICO
AUTOMATIC FILLING VALVE

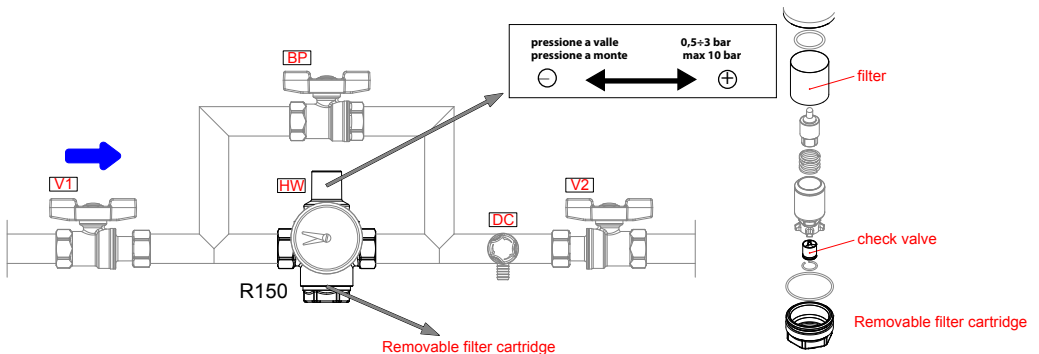


R150



R150B

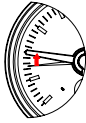
- Pressure setting: 0,5÷3 bar
Factory setting: 0,6 bar (only R150Y123)
Max. working pressure: 10 bar
Max. working temperature: 70 °C
Connections (inlet x outlet): 1/2" F x 1/2" F (R150Y103 – R150Y123)
1/2" M x 1/2" F (R150BY103)
Pressure gauge connections: 2 x 1/4"
n. 1 cap with washer (R150Y103 – R150BY103)
n. 2 caps with washers (R150Y123)



■ Increase p_{set}

V1	V2
open	close
BP	DC
close	close

1. close **HW** to p_{set}



2. open **V2**



■ Decrease p_{set}

V1	V2
close	close
BP	DC
close	close

1. open **DC**



2. fully open **HW**

3. close **DC**

4. open **V1**

5. close **HW** to p_{set}



6. close **V1**

7. open **V2**

8. open **DC**



9. close **DC**

10. open **V1**

