

Domestic water meters, for boiler room

Datasheet/Instruction
0528EN 07/2019



Domestic water meters for boiler room, GE552-3 series, with male threaded connections, multi jet, dry dial and direct reading on five/six numeric rolls, equipped for M-Bus data centralization through M-Bus module. Available in versions for domestic cold water (50 °C) and domestic hot water (90 °C).

Versions and product codes

PRODUCT CODE	PERMANENT FLOW RATE Q_3 [m ³ /h]	NOMINAL DIAMETER [mm - inch]	THREADED CONNECTIONS	CENTER DISTANCE [mm]	DOMESTIC WATER TYPE
GE552Y221	6,3	DN25 1"	1 1/4"	260	Cold
GE552Y222	10	DN32 1 1/4"	1 1/2"	260	
GE552Y223	16	DN40 1 1/2"	2"	300	
GE552Y224	25	DN50 2"	2 1/2"	300	
GE552Y226	6,3	DN25 1"	1 1/4"	260	Hot
GE552Y227	10	DN32 1 1/4"	1 1/2"	260	
GE552Y228	16	DN40 1 1/2"	2"	300	
GE552Y229	25	DN50 2"	2 1/2"	300	

Completion codes

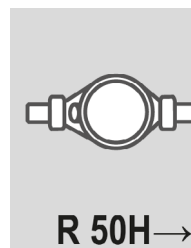
- GE552Y021: pulse module for domestic water meters for boiler room

Technical data

Technical features

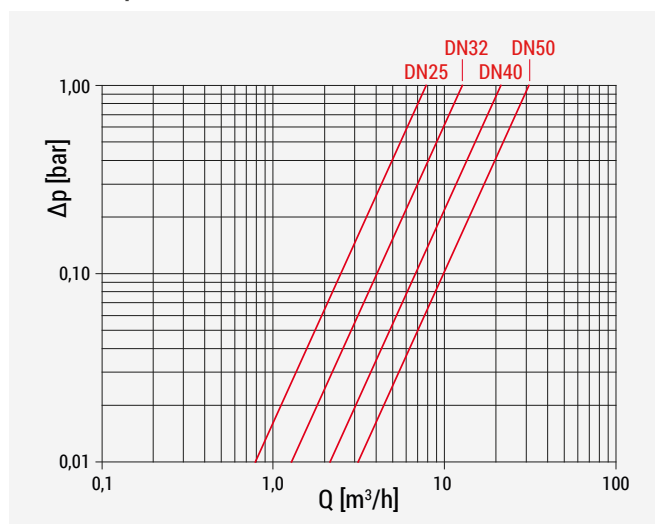
- Max. working temperature:
50 °C for domestic cold water meters
90 °C for domestic hot water meters
- Max. working pressure: 16 bar
- Direct reading on 5 numeric rolls (6 drums for DN40 and DN50)
- Through the GE552Y021 module it is possible to remotely control the GE552-3 water meters on the M-Bus using the thermal energy meters. For the connections refer to the datasheets of the thermal energy meters.

Installation positions



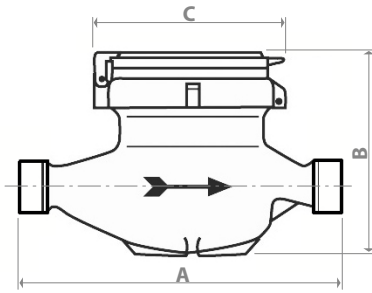
	NOMINAL DIAMETER [mm]	DN25	DN32	DN40	DN50
	THREADED CONNECTIONS	1 1/4"	1 1/2"	2"	2 1/2"
	OVERLOAD FLOW RATE Q_4 [m ³ /h]	7,9	12,5	20	31,2
	PERMANENT FLOW RATE Q_3 [m ³ /h]	6,3	10	16	25
R100 H	TRANSITION FLOW RATE Q_2 [l/h]	100,8	160	256	400
	MINIMUM FLOW RATE Q_1 [l/h]	63	100	160	250
R50 VH	TRANSITION FLOW RATE Q_2 [l/h]	201,6	320	512	800
	MINIMUM FLOW RATE Q_1 [l/h]	126	200	320	500
	SENSITIVITY [l/h]	10	10	20	20
	MINIMUM READING [l]	0,05			
	MAXIMUM READING [m ³]	99,999		999,999	

Losses of pressure



NOMINAL DIAMETER [mm - inch]	THREADED CONNECTIONS	Kv
DN25 1"	1 1/4"	7,9
DN32 1 1/4"	1 1/2"	13
DN40 1 1/2"	2"	21
DN50 2"	2 1/2"	31

➤ Dimensions



NOMINAL DIAMETER [mm - inch]	THREADED CONNECTIONS	A [mm]	B [mm]	C [mm]	PESO [kg]
DN25 1"	1 1/4"	260	117	104	2,09
DN32 1 1/4"	1 1/2"	260	117	104	2,18
DN40 1 1/2"	2"	300	153	126	4,38
DN50 2"	2 1/2"	300	172	160	4,46

➤ Compliance with MID Directive

If used for commercial applications, the water meters are classified as measuring instruments subject to the rules of legal metrology. The GE552-3 domestic water meters for boiler room comply with the requisites of Directive 2014/32/EU on measuring instruments (MID - Measurement Instrument Directive).

Name and number of NB	Performed	Issue the Certificate No.
Slovenský metrologický ústav, NB 1781 Karloveska 63 84255 Bratislava 4 Slovenska Republika Czech Metrology Institute, NB 1383 Okružní 31 638 00 Brno Czech Republic	EU type certification in accordance with Module B of Directive No. 2014/32/EU Certification of production, final product inspection and testing in accordance with Module D of Directive No. 2014/32/EU	SK 14-MI001-SMU036 Rev.3 0119-SJ-A011-08

NOTE. The metrological marking is displayed on the front of each device, next to the CE mark. It consists of an "M" plus the last two digits of the year of marking, surrounded by a rectangle.

➤ Product specifications

GE552-3

Domestic water meters for boiler room, with threaded male connections, multi jet, dry dial and direct reading on five numeric rolls (six rolls for DN40 and DN50). Available in versions for domestic cold water (50 °C) and domestic hot water (90 °C). Max. working pressure 16 bar. Meter can be remotely controlled on M-Bus using a special additional module. Compliance with Directive 2014/32/EU (MID).

⚠ Safety Warning. Installation, commissioning and periodical maintenance of the product must be carried out by qualified operators in compliance with national regulations and/or local standards. A qualified installer must take all required measures, including use of Individual Protection Devices, for his and others' safety. An improper installation may damage people, animals or objects towards which Giacomini S.p.A. may not be held liable.

♻ Package Disposal. Carton boxes: paper recycling. Plastic bags and bubble wrap: plastic recycling.

ℹ Additional information. For more information, go to giacomini.com or contact our technical assistance service. This document provides only general indications. Giacomini S.p.A. may change at any time, without notice and for technical or commercial reasons, the items included herewith. The information included in this technical sheet do not exempt the user from strictly complying with the rules and good practice standards in force.

♻ Product Disposal. Do not dispose of product as municipal waste at the end of its life cycle. Dispose of product at a special recycling platform managed by local authorities or at retailers providing this type of service.