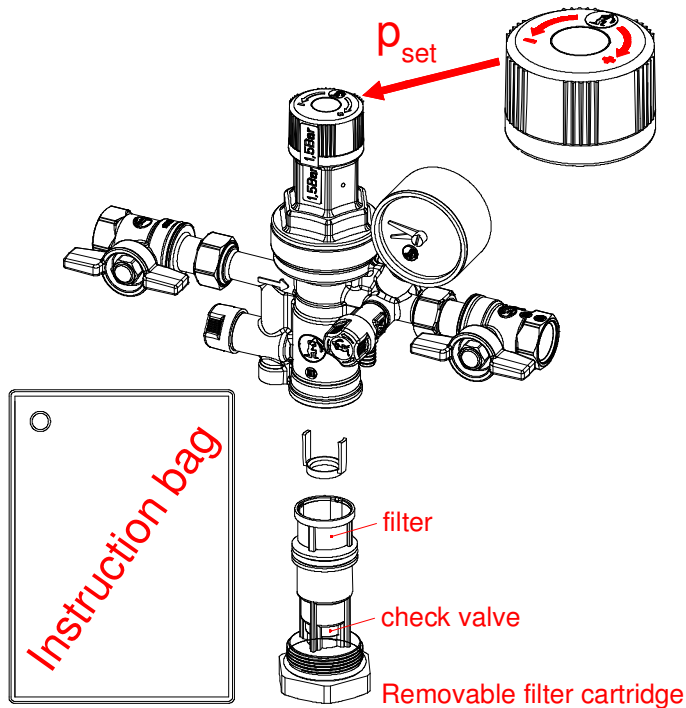


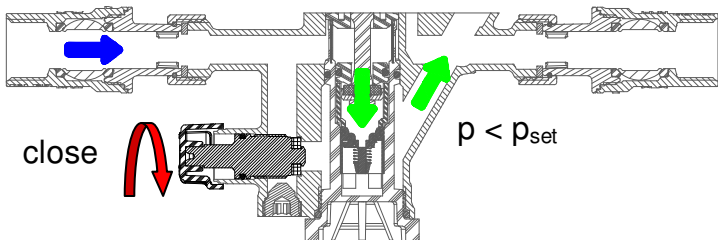


R150N

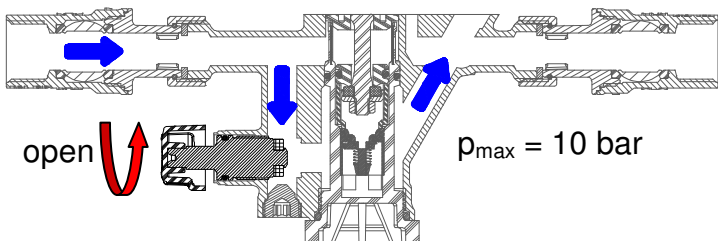
Pre-adjustable filling unit



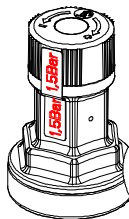
■ Automatic



■ By-pass

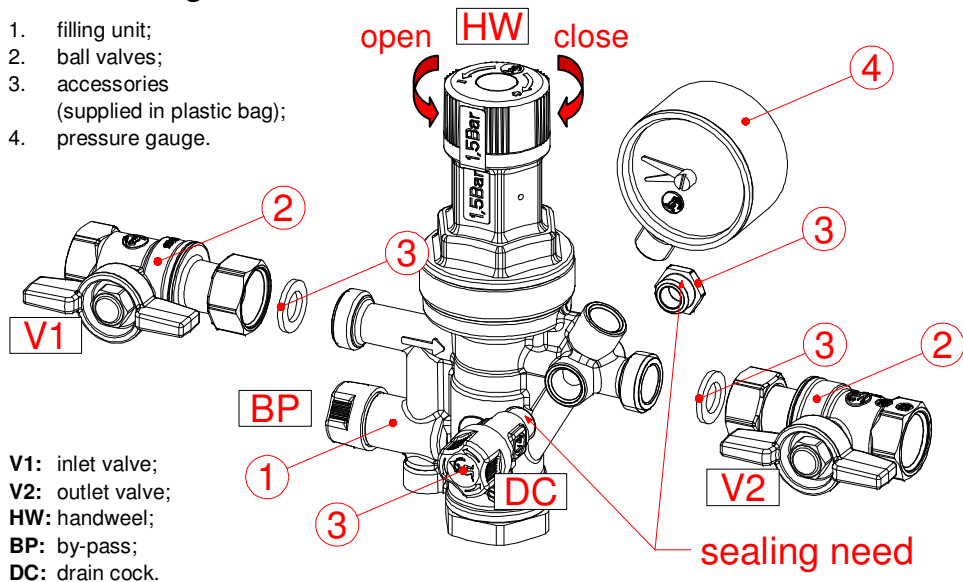


Pressure setting:	0,3 ÷ 4 bar 1,5 bar (factory setting)
Pressure gauge range:	0 ÷ 10 bar
Max. working pressure:	16 bar 10 bar (with open by-pass)
Max. working temperature:	70 °C
Connections:	1/2" F , inlet 1/2" F, outlet



■ Mounting

1. filling unit;
2. ball valves;
3. accessories
(supplied in plastic bag);
4. pressure gauge.

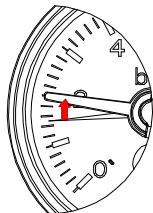


V1: inlet valve;
V2: outlet valve;
HW: handweel;
BP: by-pass;
DC: drain cock.

■ Increase p_{set}

V1	V2
open	close
BP	DC
close	close

1. close **HW** to p_{set}



2. open **V2**

■ Decrease p_{set}

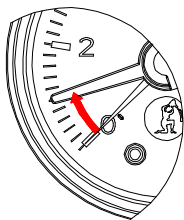
V1	V2
close	close
BP	DC
close	close

1. open **DC**



2. fully open **HW**
3. close **DC**
4. open **V1**

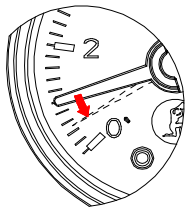
5. close **HW** to p_{set}



6. close **V1**

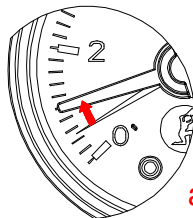
7. open **V2**

8. open **DC**



9. close **DC**

10. open **V1**



automatic

